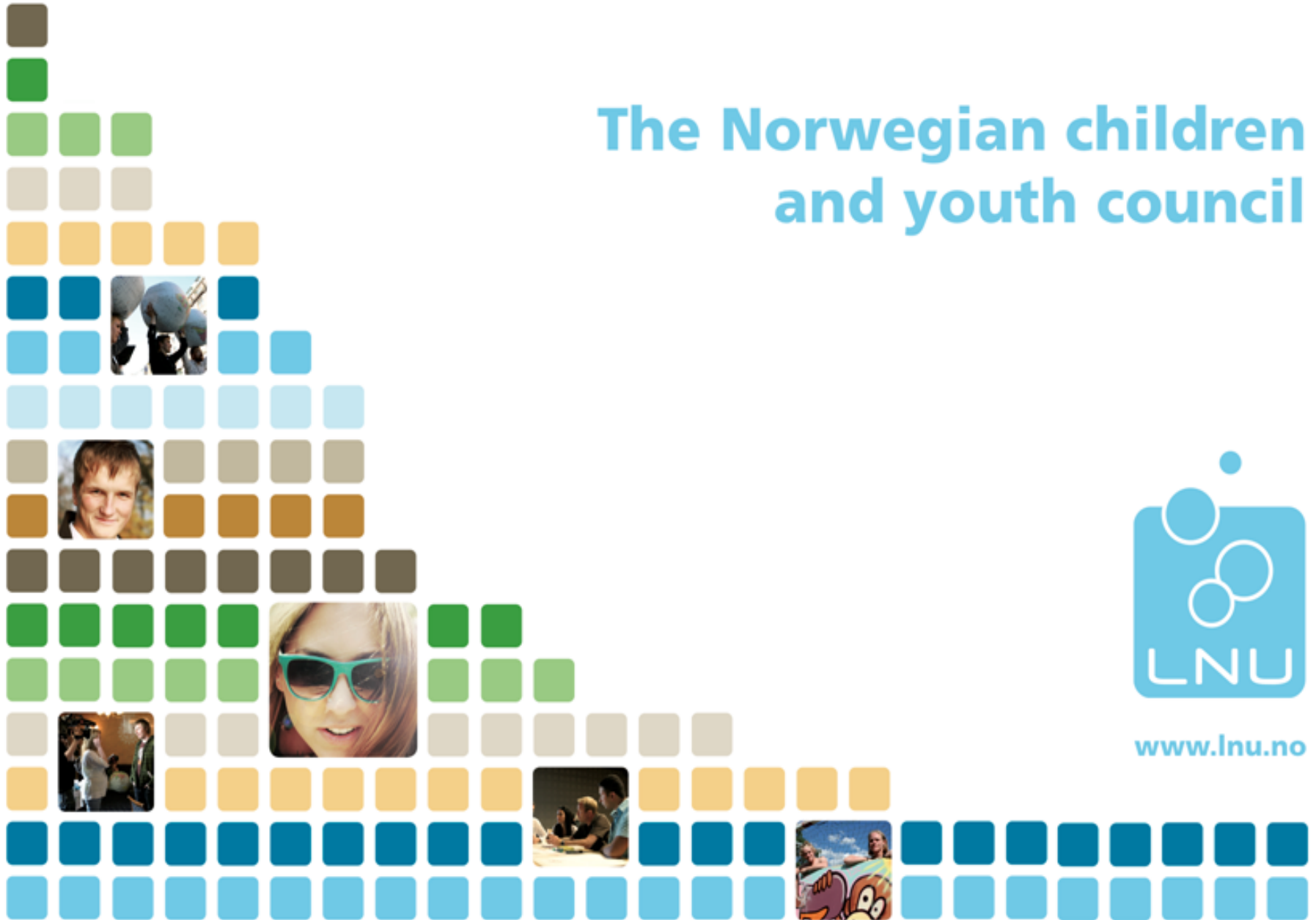


The Norwegian children and youth council



www.lnu.no

Youth, participation and elections

Voting age and mechanisms of youth involvement in the democracy



The Norwegian children and youth council



The backdrop

1995- German states lowered the voting age

2007: Austria lowered the voting age

2011: The Council of Europe calls on states to lower voting age

2012: A written declaration on lowering the voting age is introduced in the European parliament



The Norwegian backdrop

2008: The trial election is announced in a white paper to parliament

2011: The trial election

- 20 municipalities
- 9400 new voters between 16 and 18

2012: Research is released



Topics

- Expansion of the democracy
- Political socialization
- Legal principles



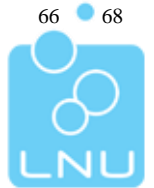
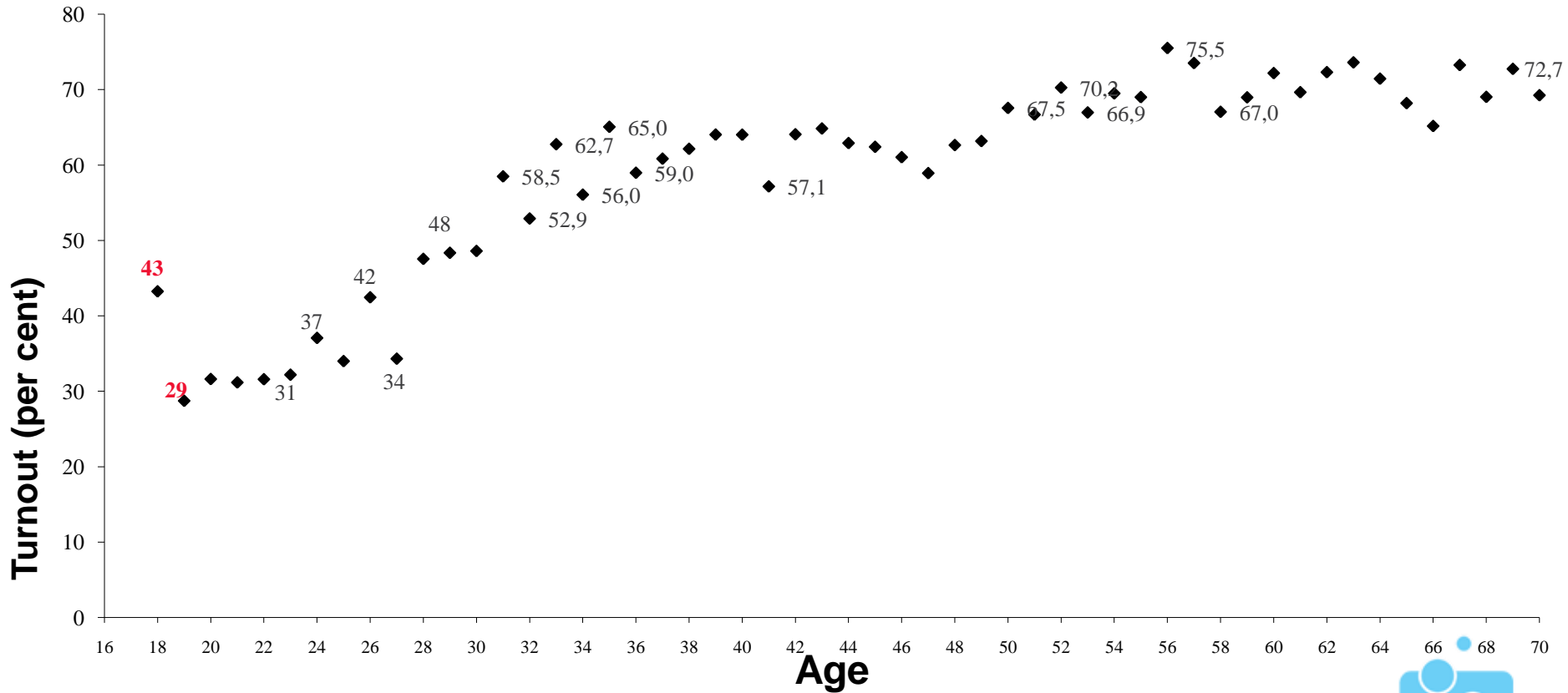
Effects on voter turnout

- The social heritage
- Life phases
- Period effects



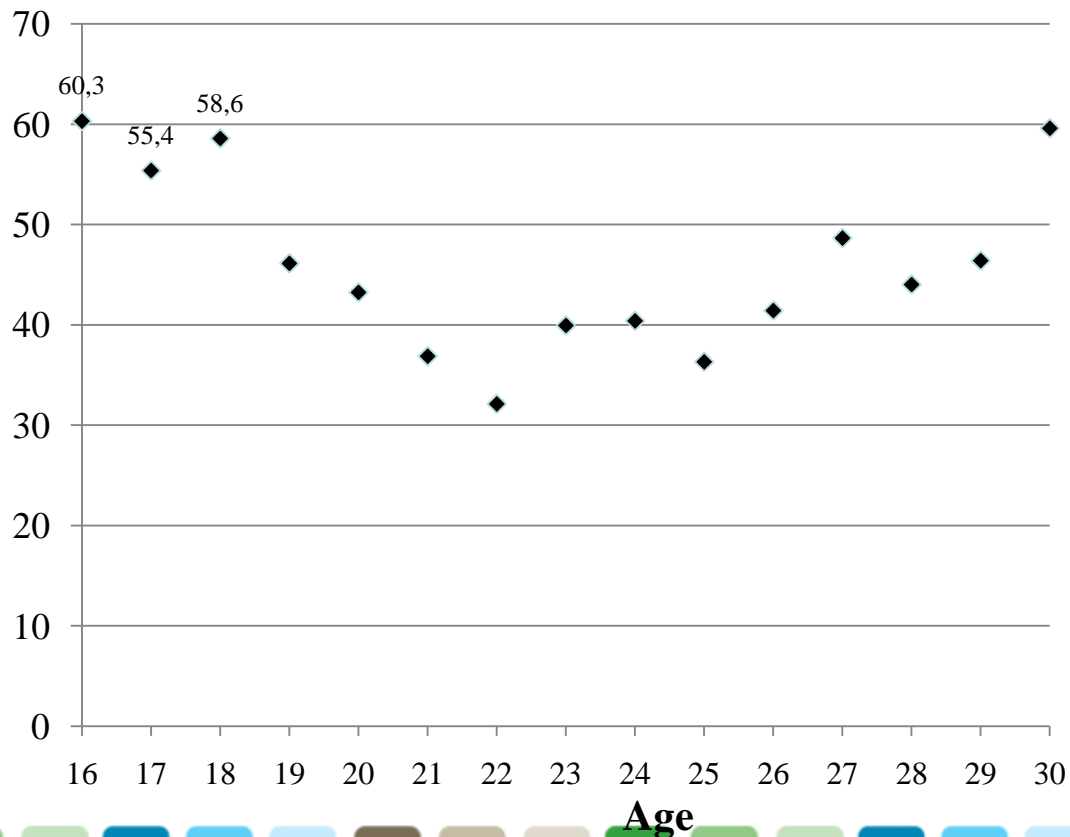
Average voter turnout by age

- Norwegian municipalities 1999-2007

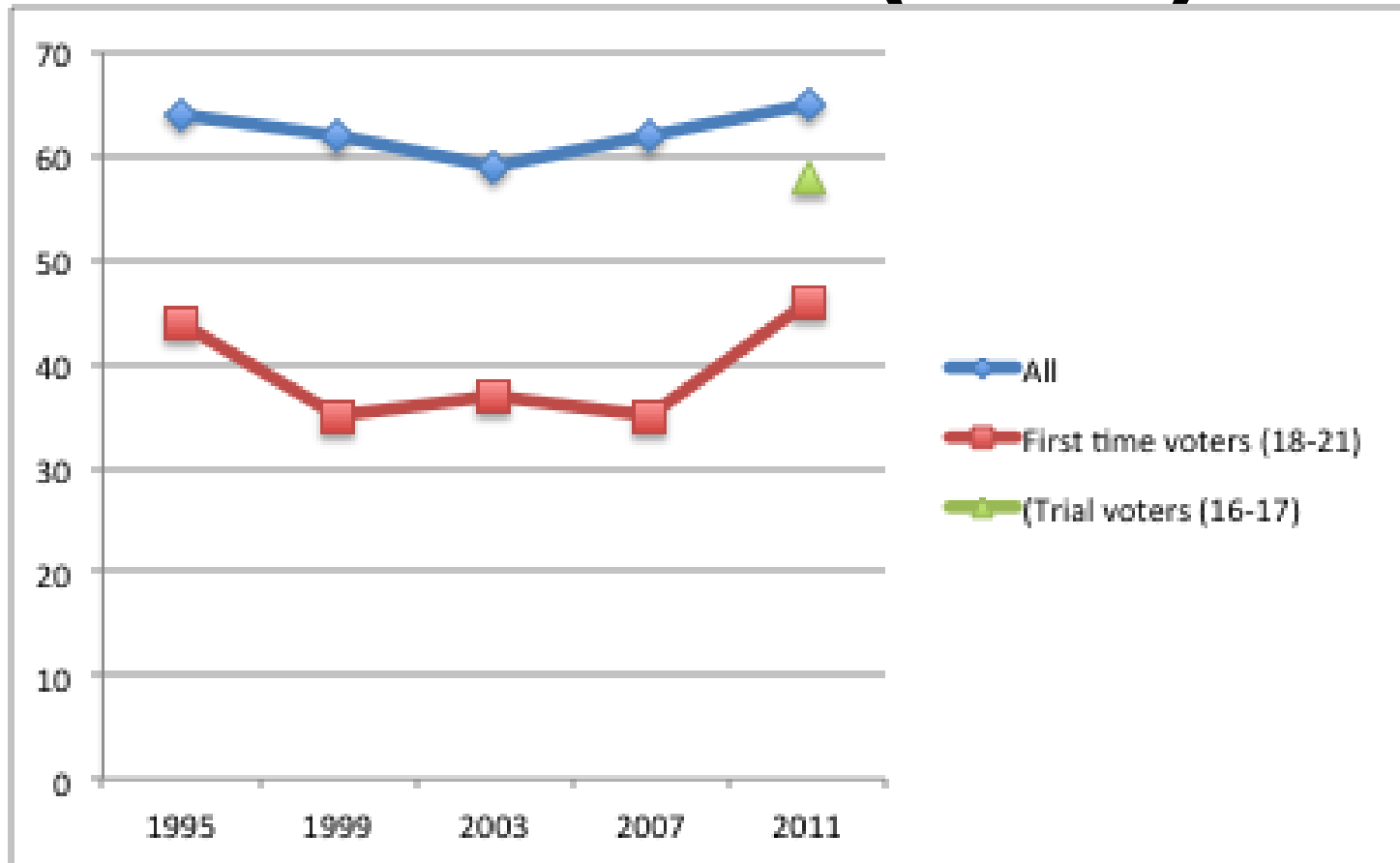


Voter turnout by age, trail election 2011

Figur 2 Valgdeltakelse etter årskull i alderen 16 til 30 år i kommunene som gjennomførte forsøk med senket stemmerettsalder. Prosent



Participation in the electorate (2011)





Local election 2011

Trial to lower voting age to 16

- 20 Municipalities
- Plus the local government of Svalbard

Trial with E-voting

- 10 Municipalities

4 Municipalities with both trials



Stem1209.no

- A campaign to increase the election turnout among young people
 - Your vote counts
 - The election is important to you and your everyday life
 - If you don't vote, someone else will make the decisions for you
- Campaign webpage
- Agents for Democracy



School election survey

Positive scores in School election survey	Trail municipalities	National Average
Interested in politics	44 %	38 %
Care most about local politics	40 %	34 %
Trust in politicians	59 %	53 %
Satisfied with the way the local democracy works	77 %	71 %
The election will determine what happens with the municipality the next 4 years	78 %	73 %
The ballot will affect how the municipality is ruled	60 %	53 %



LNU

Øvre Slottsgate 2b
N-0157 Oslo

Phone: (+47) 23 31 06 00

E-mail: lnu@lnu.no

www.lnu.no/english

